

THE WHOLE BACKSTAGE THEATRE & *Sonny Lewis*

present

TAYLOR
HYATT

SHAWN
FAHY

JOHN EVERETT
BREWER

CHANDLER
TARVIN

JAMES
KNEAR

ANNA CLAIRE
VAUGHN

JEFF
GOSSAGE



THE LION IN WINTER

DIRECTED BY
JOHNNY BREWER

PERFORMANCES

FEBRUARY 16, 17, 18, 22,
23, 24 & 25, 2024



WWW.WHOLEBACKSTAGE.COM

256.582.7469

1120 RAYBURN AVENUE, GUNTERSVILLE, AL 35976

THE WHOLE BACKSTAGE IS AN EQUAL OPPORTUNITY PROVIDER

PHOTOGRAPHY BY BENTLEY GRAY

POSTER DESIGN BY JOHNNY BREWER

The Lion in Winter

by James Goldman

The Players

(In order of appearance)

Alais Capet, a French Princess.....Anna Claire Vaughn
Henry II, King of EnglandTaylor Hyatt
John, the youngest sonJames Knear
Geoffrey, Duke of Brittany, the middle sonChandler Tarvin
Richard the Lionheart, the oldest son John Everett Brewer
Eleanor of Aquitaine, Henry's wife..... Shawn Fahy
Philip II, King of France, half-brother to AlaisJeff Gossage

The Time: Christmas, 1183

The Place: Henry's Castle at Chinon, France

SYNOPSIS OF SCENES

Act I

Scene 1: Alais's chamber, late afternoon.

Scene 2: The Reception Hall, immediately following.

Scene 3: Eleanor's chamber, sometime later.

Scene 4: The Reception Hall, immediately following.

Scene 5: Eleanor's chamber, shortly afterwards.

Scene 6: The Reception Hall, immediately following.

There will be one 10 minute intermission between Act I and Act II.

Act II

Scene 1: Eleanor's chamber, late at night.

Scene 2: Alais's chamber, before dawn.

Scene 3: The Reception Hall, at dawn.

Scene 4: The wine cellar, early morning.



Production Staff

Director	Johnny Brewer
Assistant Director	AJ Pollard
Assistant to the Director/Publicist	Katherine Brewer
Assistant to the Director/Script Supervisor	Missy Erin
Stage Managers	Steven Saint and Brad Watts
Assistant Stage Manager	Kevin Russell
Costume Coordinator	Jan Price
Scenic Artist	Bethany Kerr
Set and Lighting Designer	Johnny Brewer
Costumers	Mary Ruth McCord, Connie Ables
.....	Jan Price, Susan Ruhlman, Gena Crook
.....	Mia Oldacre and Kim March-Force
Build Crew Team Leaders	Matt Stanley
.....	Wes Trammell and Deon Smith
Build Crew	Lee Yarberry, Charles Ayers
.....	Orville Godwin, Don Nielsen, Vicky Nielsen
Prop Mistress	Katy Tarvin
Candle Mistress	Maggie Goggans
Light Board Operator	Katherine Brewer
Stage Crew	Brad Watts, AJ Pollard, Missy Erin, Katy Tarvin
.....	Steven Saint, Kevin Russell, April Russell
.....	Nick Carpenter, Maggie Goggans, Thomas Breland
Hair/Make-up/Dresser	Mia Oldacre
Dresser	Abbey Ware
Cast Photographer	Bentley Gray
Box Office	Sonya Batey
Videographer	Kevin Terrell

Primary rental costumes provided by:

Sarasota Opera Costume Rental Studio, Sarasota Florida
Howard Tsvi Kaplan, Costume Designer

Additional rental costumes provided by:

Pioneer Theatre Company, Salt Lake City, Utah
Do'nel Ault, Costume Rental Coordinator

Additional costumes designed and created by Dot Moore for the
Whole Backstage 2001 production of *Camelot*, Johnny Brewer, Director

Who is the Production Team Behind the Scenes of *The Lion in Winter*



Johnny Brewer
Director



AJ Pollard
Assistant Director



Missy Erin
*Assistant to the Director
Prompter*



Steven Saint
Stage Manager



Brad Watts
Stage Manager



Kevin Russell
Assistant Stage Manager



Jan Price
Lead Costumer



Katy Chumley
Props Mistress



Maggie Goggans
Candle Mistress



Katherine Brewer
Assistant to the Director



Thomas Breland
Stage Crew



April Russell
Stage Crew



Nick Carpenter
Stage Crew



Stage Crew



Maggie



Our Costumers

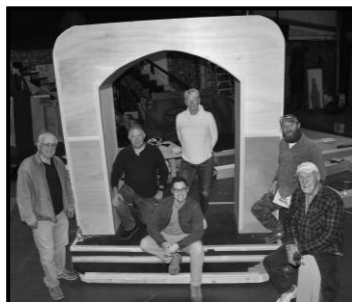
Jan Price, Susan Ruhlman, Mary Ruth McCord,
Mia Oldacre, Connie Crook, Connie Ables and
Kim March-Force



**Charles Ayers
Orville Godwin**



**In memory
Don Nielsen
1954-2024**



The Build Team

Deon Smith, Lee Yarberry, Matt Stanley
Vicky Nielsen, Wes Trammell, Don Nielsen



Meet the Cast of *The Lion in Winter*



TAYLOR HYATT (King Henry II) is thrilled to once again return to the stage to celebrate The Whole Backstage's historical 50th anniversary season with this very special production of *The Lion in Winter*. It has been eight years since Taylor last crossed the stage as a performer, in WBS's 2016 production of *Almost, Maine*. A few other notable credits from his days at The Whole Backstage include Lt. Col. Matthew Markinson in *A Few Good Men*, Lord Capulet in *Romeo and Juliet*, and Mr. Applegate in *Damn Yankees*.

These days, he spends most of his time behind the scenes as the theatre teacher for Arab City Schools and director of the nationally acclaimed and award-winning Arab Musical Theatre. Taylor would like to thank his friend and mentor, Johnny Brewer, for welcoming him back with open arms and giving him the opportunity to share this experience with friends new and old. He also invites you all to see AMT's *Mary Poppins*, March 21st-30th at Arab High School - Tickets available now at www.amtshows.org!



JAMES "JUICE" KNEAR (John) is the youngest son, John, and later King of England in this production. James is a 2023 graduate of Arab High School and is no stranger to the stage. A former student of Taylor Hyatt's (King Henry II), James has performed in many theatre productions, such as Arab Musical Theatre's *Once Upon a Mattress*. A talented actor, James most recently portrayed Max in the WBS first mainstage show of its 50th season, *Bright Star*, and last season as the cocky and arrogant head cheerleader Joe

Scales in *Cheaper by the Dozen*, *Black Tie Christmas*, and The Greek in *Guys and Dolls*. A gifted pianist, James is thrilled to be a part of this production of *The Lion in Winter* and to work with such a talented cast and crew.



"God, I love being king!" ~ Henry II, King of England



SHAWN FAHY (Eleanor) began performing in grade school, appearing in *The Unsinkable Molly Brown*, *Sweet Charity*, and *Grease*. In her local community theatre, she was in *The Miracle Worker*, *Heaven Can Wait*, *Countess Dracula*, and *There Goes the Bride*. After attending Indian River Community College on a Theatre scholarship as an Acting major, she earned a Bachelors and a Master of Social Work. Her career and becoming a busy mom kept her from the stage for years until she played a small role in

Saloon Keeper's Daughter for Huntsville Community Chorus. Other local shows followed, *Inherit the Wind*, *The Sound of Music*, *A Christmas Carol*, *My Grandfather's Letters*, *Lend Me A Tenor*, and *Death by Design*. Shawn loves being onstage as well as working backstage as Props Mistress, Set Dresser, Costumer and Assistant Director for Theatre Huntsville productions, and has served as Secretary and President of the Board of Directors. She has directed shows including David Moberg's independent production, *Throwaways*, and TH's *Southern Hospitality* and *Steel Magnolias*. As Shawn's first WBS production, she sends a huge thank you to Johnny Brewer for the opportunity to play her dream role, and many thanks to the cast and crew of *The Lion in Winter* for their warm welcome. Love and hugs to her friends and family for all their love and support.

"For the love of God, can't we love one another just a little?" ~ Eleanor of Aquitaine



CHANDLER TARVIN (Geoffrey) Chandler's first acting role was in the 2017 Whole Backstage murder mystery, *You Have the Right to Remain Dead* where he appeared as Ajax. Some of Chandler's notable roles since he became involved at the WBS include Jack Chesney in *Charley's Aunt*, and Gary LeJune in *Noises Off!* Chandler graduated from Jax State in 2019, where he was also actively involved in their theatre and English departments. Chandler works at Snead State Community College where he is the Career

Coach and the College Ambassadors sponsor.

"No one thinks of crowns and mentions Geoffrey!" ~ Geoffrey



ANNA CLAIRE VAUGHN (Alais) is currently enrolled at Snead State Community college and is a theatre scholarship recipient. She is pursuing a degree in nursing and plans on transferring to UAH in the coming fall. Anna Claire has participated in theatre since she was eight years old, as well as being a part of Albertville High School's show choir program. Her senior year she was in both Centerstage! and the newly rebranded women's show choir group CenSations! Anna Claire's favorite shows were *A*

Midsummer Night's Dream playing Hermia at Snead State, as well as performing in the ensemble in *The Whole Backstage* 2022 summer musical, *Guys and Dolls*, directed by Johnny Brewer. Anna Claire hopes to continue growing as a performer and is very grateful to have the opportunity to play the role of Alais.

"Kings, queens, knights everywhere you look and I'm the only pawn. I haven't got a thing to lose: that makes me — dangerous" ~ Alais



JEFF GOSSAGE (King Philip II of France) was raised in Nashville, TN and moved to Guntersville in 2014 with his wife Amy. They are enjoying living in Guntersville and raising their son Charlie here. A graduate of Western Kentucky University, Jeff earned a Bachelor of Science degree in Hospitality Management. He is currently employed locally with the Main Channel Brewing Company. Jeff began acting at the age of 11 in school productions. Through high school he participated in every show and

had opportunities to perform at the Dark Horse Theatre in Nashville as well as for a promotional commercial for Kroger Grocery Stores. After college Jeff began a professional career and took a 17-year break from acting. Jeff has really enjoyed being a part of *The Whole Backstage* and recently played the Steward in the 2023 summer production of *Into the Woods*. He is happy to be back on stage and doing something he truly loves.

"Your life and never are two different times" ~ Philip II, King of France



JOHN EVERETT BREWER (Richard the Lionheart) in his first dramatic role, is excited to venture out from his usual comedic and musical characters in previous Whole Backstage and Snead Theatre productions. Recently, he directed and starred in the hilarious WBS holiday production of *A Tuna Christmas*. He grew up on this stage with notable roles including *The Wizard of Oz* as the Cowardly Lion, *Charley's Aunt*, *Guys and Dolls*, *Greater Tuna*, *Charlie Brown*, *Camelot*, *The King and I* and *Into the*

Woods. A graduate of Albertville High School, John Everett performed in the nationally award-winning show choir, CenterStage!. As a Presidential Scholarship recipient at Snead State, he earned an Associate Degree in Communication Studies, where he was honored with the American College Theatre Festival's prestigious Irene Ryan Award. John Everett earned a Bachelor of Science degree in Accountancy from Auburn University and was inducted into several honors organizations. While serving as Treasurer of Tau Kappa Epsilon Fraternity, his financial leadership propelled the AU chapter to achieve the nation's top ten fund-raising campaigns for St. Jude Children's Research Hospital. Currently he serves on the WBS Board of Directors.

"Don't play a scene with me." ~ Richard the Lionheart

About the Story

It is Christmas of 1183, and Henry II of England and Eleanor of Aquitaine are together again in the castle at Chinon, France. For all their regal status, they are much like any long-estranged but inseparable married couple: Henry flaunts his new mistress; Eleanor plots against him with their sons. They will do anything they can to hurt each other and yet they love each other to distraction.

About the Music

All of the music used for pre-show, scene changes and intermission is based on original music manuscripts of Christmas music from 12th century Aquitanian Monasteries.

"There's no use asking if the air is any good when there's nothing else to breathe." ~ Henry II, King of England

“Lion-isms”

A glossary of terms used in this production of *The Lion in Winter*.

What is the meaning of the title “The Lion in Winter”?

The phrase generally refers to a proud, competent man who's aging (in the winter of life) but remains active and vital. In our case, it is Henry II, King of England. But the expression also foreshadows Richard, the oldest of the three sons of Henry and Eleanor. Richard is often known as “Richard the Lionheart. He is his mother's choice for the next king and is the warrior among the three sons.

Aesthete – a person who has or affects to have a special appreciation of art and beauty.

Annulment – a declaration of a marriage to have had no legal existence. In the 12th century in England, the Catholic Pope would have to declare a royal marriage annulled.

The Aquitaine – a region and former province of southwestern France. The largest acquisition of property, it became an English possession by the marriage of Eleanor of Aquitaine to Henry II in 1152 and remained so until 1453.

Chancellor – the secretary of a nobleman, prince, or king,

Connubial – relating to marriage or the relationship of a married couple.

Dowry – a payment, such as property or money, paid by the bride's family to the groom or his family at the time of marriage.

Goad – a verbal stab or urge on as if with a pointed stick.

Helen – a figure in Greek mythology said to be unbelievably beautiful. Famously known as “the face that launched a thousand ships.”

Interminable – incapable of being terminated; unending.

Medea – a character in the ancient Greek play *Medea* written by Euripides. In the play, Greek princess Medea learns that her husband Jason is leaving her for a princess of a different Greek kingdom. Medea takes vengeance on Jason by murdering not only his new wife, but also her own two sons. Medea then escapes to Athens to start a new life.

Pustule – a small blister.

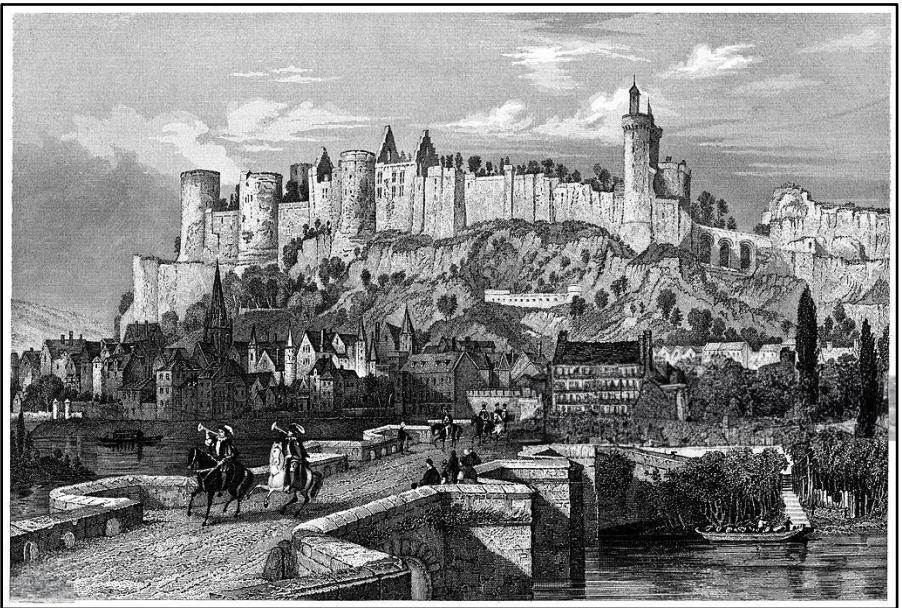
Pontiff – the Latin term for bishop or pope.

Pontificate – the office or term of a pontiff.

Tawdry – showy and tacky

Rosamund Clifford – was reputed as one of the greatest beauties of the 12th century and in English folklore was Henry's former mistress and allegedly poisoned by Eleanor.

Vexin – a historical county of northwestern France, 20 miles from Paris.



Château de Chinon

Built as a Roman fortress, the Château of Chinon is a castle located on the banks of the Vienne River in the city of Chinon, France. In the eleventh century, the castle became the property of England and in 1156, Henry II took the castle from his brother Geoffrey. Most of the standing structure can be attributed to his reign and he died there in 1189 and is buried in the Abbey of Fontevraud near Chinon along with Eleanor of Aquitaine, and their son, King Richard the Lionheart.

Backstage Partner

D&F
EQUIPMENT
SALES, INC.

Whatever it Takes.



GPS Powersports
Lake Guntersville

Backstage Partner



DON & SUSAN MOSER
**NORTH ALABAMA
SAILING MARINA**

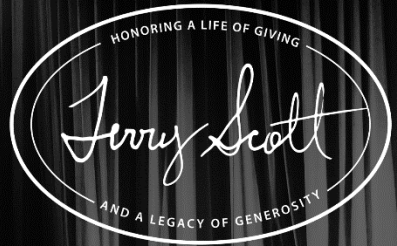
"Best Sailing in the South"

NORTHALABAMASAILING.COM

Backstage Partners

STEVE & GENA
Vinyard

Backstage Partner



RUDY AND DEBORAH CORNELIUS
THE CORNELIUS TEAM

(256) 506.2615 | rcdc1@charter.net



**MOUNTAIN
LAKES**
Real Estate



Committed to Community

Celebrating twenty years
of service and success.



CITIZENS
BANK & TRUST

Small Bank. Big Difference.™

Albertville • 256-878-9893

Arab • 256-931-4600

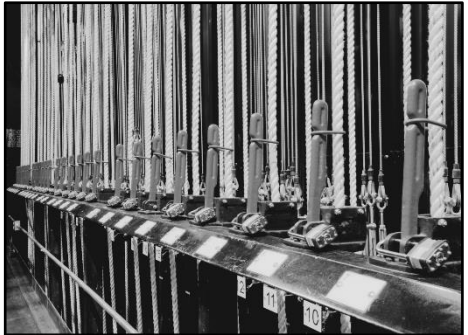
Guntersville • 256-505-4600

visit us at citizensbanktrust.com

Member
FDIC



KOHLACADEMY.NET



Backstage Partner



REDSTONE
FEDERAL CREDIT UNION™
Live Brighter!

800-234-1234 | redfcu.org

Insured by NCUA



Make A Precision Decision.

Precision machining and fabrication, serving aerospace, commercial and industrial partners.



(256) 753-2212
marshallprecision.com

29000 CERTIFIED

ISO 9001:2015



Time For A Doctor?

Visit our website to search by name or specialty for the care you need.

mmcenters.com/physicians



SEARCH NOW

Become a Patron

We are grateful to our generous Patrons and all who support The Whole Backstage Theatre. Please consider joining us today for our historic 50th Season and your benefits will include:

- ★ NEW! Access to Patron Lounge open one hour prior to each regular season show
- ★ Discounted ticket prices and early access to reservations
- ★ Reserved seating for the entire season
- ★ Recognition in each show's program
- ★ Invitation to all Special Events and Opening Night Receptions
- ★ Fantastic value for live theatre in our region
- ★ Playing a leading role in our ability to create transformative theatre experiences that can be enjoyed by everyone in our community
- ★ And much more!



Scan here, visit
WholeBackstage.com or call
(256) 582-SHOW to learn more!

The WBS Board of Directors would like to thank **Dr. John and Beth Ann Ziebarth** for the donation of wine for the Opening Night Patron Receptions for each of our regular season shows.



Thank You

for your contributions in preparing our historic home to celebrate 50 years of community theatre!

CITY OF
Guntersville
ALABAMA



E3 ELECTRIC
BOARD
OF GUNTERSVILLE



MCFFA

MARSHALL COUNTY FOUNDATION
OF FINE ARTS

WOODALL APPRAISALS



50 years ago, the WBS as we know it transformed from the Teen Club to The Whole Backstage. Its first formal production was *Fiddler on the Roof* directed by “founding mother”, the late Dot Moore. The musical focused on “family” and “tradition” of which Dot had tremendous passion.

In Remembrance – Sonny Lewis



It is with a sad heart that the WBS says goodbye to a cherished friend, Sonny Lewis who passed away on January 5, 2024. We honor and recognize his commitment and benevolence to The Whole Backstage. William E. "Sonny" Lewis was a Guntersville native who spent his professional career in California working as a costume designer in Hollywood and teaching at the University of California, Irvine.

He returned to Guntersville after retiring in 1991 and became involved in numerous civic and cultural activities, including the creation of Errol Allan Park. He is a major contributor to the Guntersville Museum where he served on the Board of Directors and is a generous donor to the Whole Backstage Community Theatre. He is a lifetime member of the Guntersville Historical Society, where he also served on the Board. Sonny graduated from Marshall County High School in 1953. He earned a Bachelor of Arts degree from Auburn University in 1957 and a Master of Fine Arts from the University of California, Irvine. After graduating from Auburn, he joined the Army, completing 2 years of active service.

An undeclared historian of Guntersville, Sonny's family homesteaded Lewis Mountain several generations ago. He has contributed to the restoration of the historic Montgomery Gilbreath House, the home of his great-great grandfather. Along with the late Errol Allan, he purchased and restored the old Glover family home on Blount Avenue, named by Errol, "Gloverton".

Sonny was a major contributor and consultant for The Whole Backstage with our costume construction room, dressing room, and lobby renovations as well as other areas in the facility. Before his passing, the WBS costume construction hallway was named in his honor.

His generosity, encouragement, involvement, patronage, and influence, continue to make invaluable positive and lasting effects for our organization.

Our Arts community has lost a true advocate and friend. May his memory reflect the power of support, kindness and giving to others.

**The Whole Backstage
2023 - 2024 Partnership/Patron Membership**

Full Season Partner

Sonny Lewis

Curtain Partner

Sign Makers

Backstage Partner

Citizens Bank & Trust

D&F Equipment Sales, Inc.

Jane Kohl

Marshall Precision Manufacturing, Inc

Marshall Medical Centers

Don & Susan Moser

Redstone Federal Credit Union

Jean Ann Scott

Steven & Gena Vinyard

Leading Role

Robert Crook

Linda Flaherty-Goldsmith

Guntersville Water & Sewer Board

Lakeside Clinic

Joyce Rehfeld

Rodney's Flower Shop

Roy & Myra Rollings

Sand Mountain Toyota

Butch & Elizabeth Starnes

Nancy & Ann Ursery

John Woodall

Mark & Megan Zeien

Dr. John & Beth Ann Ziebarth



Underwriter

Jeff & Jennifer Baker
Denise & Peter Bertonaschi
Melissa Brazelton-Reeves
Dr. Frank R & Beth Fogle
Christian Barrett Gibson
John & Cheryl Mackin
Dr. Bill & Debbie Moss
Oliver Tire Pros

Benefactors

Dr. Pamela Abney	Matthew & Amy Everett
Rudy & Doris Adler	Pat Farrington
Alatrade Foods	Martin Freeman
Elaine & Earl Alspach	Orville & Charlotte Godwin
Dr. Barbara Atchley	Jack & Lisa Hancock
Roger & Pam Baird	Natalie Harber
Roy & Carol Baker	David & Tami Kelly
Lisa Baker	Kohl Academy of Performing Arts
Edward Beam	Malanta Knowles
Gary & Sue Bilke	Rachel & Alan Lambert
Don Birdwell	Nancy Lennartsson
Dr. & Mrs. John W. Boggess	Heather Lokey
Brent & Shirley Breland	Dan & Gail Lueker
Johnny & Katherine Brewer	Jennie McBride & Jim Goshorn
Sarah Brown	John & Martha McClendon
Sally Brown	Mary Ruth McCord
Chuck & Wanda Burgess	Frank McDaniel
Cadence Bank	Carolyn Mcright
Jenna Carpenter	Bob & Vicki Moore
Bill & Laura Casey	Jan Price
William Cash	Romona Rice
Craig & Denise Cornwell	Clo Dean Rodgers
Reese & Julia Covington	Paul & Patricia Schultz
Jo Druen	Rush & Barbara Sedberry

Benefactors (Con't)

Deon & Judy Smith	Sharon W. Turk
Terry & Dianne Strickland	Stanislava Williams
Prissy Terrell	Lee & Lita Yarberry
Donavan & Melanie Thomas	Westmoreland Tire
Wes & Alli Trammell	Wyndham Garden

Featured Players

Betsy Adams	Pattie R Finney & Margaret
Niel & Marche Altom	Finney Billingsley
Charles & Radona Ayers	Sherree Foxx
Marsha & Hollis Babb	Sandra Gilliland
Jodi Baker	Bonnie Glassco
Jessie Barker & Teresa Owens	Julie & Jana Golden
Mike & Claudia Belyeu	Phillip & Paula Goodson
Shara & Toney Benefield	Ann Hall
David & Linda Berry	Phillip & Karen Hallenbeck
Black Tie Productions, LLC	Gaylan & Cynthia Hamilton
Johnny Bolton	Ashlee Haycraft
Jana Bonds	Jim & Jonita Haynes
The Bug Doctor	Heather Summerson
Neil & Pam Branham	Rob & Butch Henderson
Dan & Glenda Brasher	Dr. Stephen & Susan Henderson
John Everett Brewer	Patricia Hoerth
Ashleigh Brown	Amanda Hollrah
Bill & Sharon Brown	Harmon & Eleanor Hudgens
Rachel B. Brown	Charlie & Tracy Jimmerson
Dr. Bob & Terry Calcote	Don & Marquita Jones
Angela Cash	Joni Grounds
Amanda Coolidge	Rowland & Joan Kanner
Bob & Mary Copeland	John & Genell Kermondy
Rudy & Deborah Cornelius	Carol King
Thomas & Joan Darnell	Rodger King & Sharon Duncan
Harold & Rebecca DeArmond	Terry Kirkland
Bill & Karen Decker	Wallace & Cassandra Kistler
Jean Emmans	Diedra Kitchens

Featured Players (Con't)

Lake Guntersville Chamber of
Commerce
Colleen Lee
Frank Levy
Tom & Sharon Lithgoe
Joe & Bonnie Luttrell
Janice Marlor
Fred & Pat Martin
Sandra & Kay Martin
Wanda Mashburn
Charles & Mossie Maurer
Tammy McClaran
Jimmy & Lynn McFarland
Leasha Megehee
Steve & Kathy Mercer
Richard & Janice Moebes
Mike Moody
Sheila Morgan
John & Diane Myers
Jerry & Diane Nabors
Leslie Neely
Sheila & Butch Norckauer
Tammy Parsley
David Patten
Bill Payne
Curtis Perry
Bonnie Phillips
Bea Picou & Allyson Lewter
David & Nancy Pollock
Douglas & Jean Powell
Dianne Prestridge,
Broker/Realtor
John & Claire Reed

Rich & Denise Resler
Alan & Becky Richardson
Tom & Judy Rippel
Kimberly Rogers
Richard & Susan Ruhlman
Steven & Allison Saint
Patricia Sawyer & Dale Ewert
Alan & Suzi Scott
Carol Self
Cheryl Shearer
Mark & Ursula Sheffer
Kathryn Skube
Jerry C & Brenda C Smith
William Smith
Reba A. Smith
Randy Snider
Barbara & Whitney Snow
Joyce Tidmore
Tony Triolo
Tony Turner & Ashley Anthony
Kathy Van Polen
Byron & Jane Waldrop
Catie Wells
Mitzi Whittenburg
Grover & Barbara Williams
Dorothy & Harry Williams
Dodd Williams
Henry T & Susan Wilson
Nancy Wilson
Tracy Withrow
Craig & Annette Woodward
Marilyn Wycoff
Mori Yancy & David Murphy

Star

Lee Alexander	Frances Maddox
Cathryn Ams	Chip Manning
Mary Beard	Nancy McAllister
Rachel Bonds	Shirley Mitchell
Karen Bucher	Sue Morgan
Rebecca Cornwell	Rhonda Osborne
Shirl Culbert	Cecilia Pullen
Sharon Daily	William Rex
Pat Davis	Judy Rhea
Lula Dobbs	A. Phyllis Rodgers
Barbara & Doug Drewry	Arcelia Sample
Diane Duboise	June Schroeder
Barbara Eubanks	Michael Smith
Valerie Fleming	Delania Snead
Linda Formby	Phil Spicuzza
Evelyn George	Patty Spicuzza
Stephanie Graham	Linda Sproul
Brandi Hicks	Marilyn Stroud
Jane Higgins	Linda Stover
Sandra Hill	Lily Alexander
Barbara Holley	Connie Thompson
Harvard Holley	Lois Uhlir
Peggy Lowery	Barbara & Dan Warnes

Become a Patron Today!

We are very grateful to our generous Patron members and to all of you who support *The Whole Backstage*.
Please consider joining us!



We measure our success by the success of our customers.

bpimedia group

*Find Your
Marketing
Solution
Today*

- Offset & Digital Printing
- Wide Format, POP, & Signage
- Roll Labels
- Web-to-Print Storefronts
- Fulfillment & Mail Services
- Specialty Products
- Graphic Design

340 DENSON AVE | PO BOX 600 | BOAZ, AL 35957 | 256.593.2048 | BPIMEDIAGROUP.COM

Ultimate Window Cleaning LLC

Window Cleaning & Pressure Washing
Servicing Northeast Alabama

Joshua Harbin
(256) 557-4017



joshuahdharbin@gmail.com
Ultimatewindowcleaning@yahoo.com
@ultimatewindowcleaningllc



Grants to The Whole Backstage were made possible in part by the Alabama State Council on the Arts and the National Endowment for the Arts.



Proud recipient of an

**ALABAMA ARTS
RECOVERY PROGRAM
GRANT**



**NATIONAL
ENDOWMENT
for the ARTS**
arts.gov

**BANNERS METAL SIGNS CUSTOM ACRYLIC LETTERING
ACRYLIC SIGNS CUSTOM VINYL YARD SIGNS**



**CALL 256.582.2474
OR EMAIL US:
SIGNS@SIGNMAKERSAL.COM**

**HAPPY
50TH!**

**THANK YOU FOR ALWAYS TRUSTING US
WITH YOUR SIGNAGE!**

The Whole Backstage Theatre Board of Directors - 2023-2024

Denton Gillen: President
Wes Rorex: President-Elect
Dana Thomas: Secretary
Bob Crook: Treasurer
Andy Hunter: VP of Facility
Jane Kohl: VP of Administration
Andrea Oliver: VP of Development
John Davis Rollings: VP of Publicity
Diane DuBoise: VP of Production
Kristen Gillen: VP of Youth Theatre
Johnny Brewer: Past President

Sue Bilke, John Everett Brewer, Katherine Brewer, Thomas Darnell
Rodger King, Debbie Moss, Julie Oliver, Jan Price, Claire Richards
Wes and Allison Trammell, Wendy Zahn

Lifetime Members

Robin Moore
Dot Moore (1933-2013)
John Duff (1922-2003)



H&H PRINTING SERVICE

9001 US Highway 431 • Albertville, AL 35950

Phone (256) 878-8829 • Fax (256) 878-8867

www.handhprinting.com

Business Forms • Business Cards
Letterhead • Envelopes • Brochures
Invitations • Booklet • Flyers • Etc.

WIDE FORMAT PRINTING

Banners • Posters • Yard Signs, Etc.

**DIGITAL
COLOR PRINTING**

*Now
Offering*

**PROMOTIONAL
PRODUCTS**

Calendars • Pens • Keychains • Mugs
Umbrellas • Lanyards • Shirts • Hats
Campaign & Election Products
& Much More!



PARAGON

PARAGONPG.COM

Thank!
You.

bpimedia
group



BENTLEY GRAY

PHOTOGRAPHY

Acknowledgments

The Advertiser Gleam – Anthony Campbell
The Sand Mountain Reporter – Elizabeth Summers
H & H Printing Service – Carla Barkley, Albertville
Arab Musical Theatre – Taylor Hyatt, Director
Albertville, Arab, Boaz, Guntersville & Grant Chambers of Commerce
Snead State Community College Theatre Department – Kyle Steffen, Director
Bentley Gray Photography – Bentley Gray, Boaz
Erin Barrow - Theatre Happenings – Huntsville
Ross Graden Lumber – Guntersville
WRSB – Arab
WAVU/WQSB – Albertville
WRAB – Arab – Archie Anderson
Paul and Sulynda Shell
Tim McRae
Mark and Megan Zeien
Chris and Brooke Hemphill
Amy and Charlie Gossage
WBSA – Boaz
WTWX/WGSV– Kerry Jackson
WAFM – Arab
Michael and Kay Johnson
Sadie Shell
Paragon – The Glassco Family
Jeff and Stacy McLaughlin
Bob and Gena Crook
Jeff White Photographer – Huntsville
SoFly Productions – Kevin Terrell
Streamline Cleaners – Scott and Lou Ann Patton, Guntersville
Marshall County Foundation for the Fine Arts – John Woodall
Lumpkin House - Warren and Madison Stewart, Albertville
Saint Paul Methodist Church, Boaz
The City of Guntersville
Black Tie Productions, LLC
Topeka Community Foundation
The Times Journal – Fort Payne
The Arab Tribune – Charles Whisenant
The Huntsville Times
The Gadsden Times – Greg Bailey
Alabama Ledger – Brandon Pierce
Southern Torch – Marla Jones, Rainsville
Mountain Valley News, Rainsville
Wilks Tire & Battery Service Inc. – Shane and Craig Wilks
Sand Mountain Toyota – Mark and Jeannie Brickey



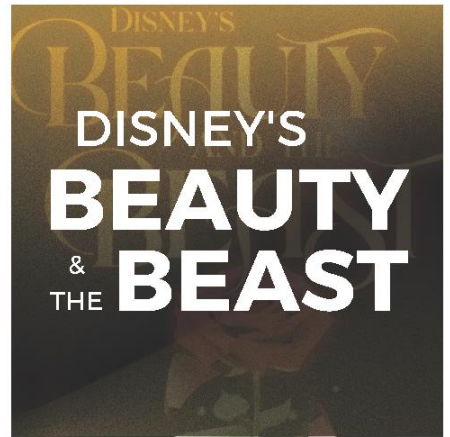
The Whole Backstage Theatre

1120 Rayburn Avenue/Dot Moore Way – P.O. Box 895
Guntersville, AL 35976 256-582-7469 www.wholebackstage.com

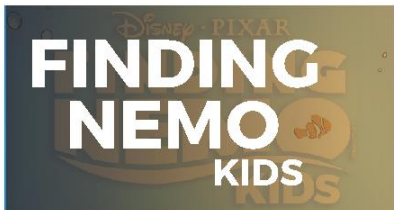
UPCOMING SHOWS



**DIRECTED BY DEBBIE MOSS
SPRING 2024 (REGULAR SEASON)**



**DIRECTED BY DIANE DUBOISE
SUMMER 2024 (REGULAR SEASON)**



**DIRECTED BY
CELESTE HALLENBECK &
JOHN DAVIS ROLLINGS
YOUTH THEATRE**



**DIRECTED BY
CELESTE HALLENBECK &
JOHN DAVIS ROLLINGS
YOUTH THEATRE**

The Whole Backstage is an Equal Opportunity Provider.